



WORKLIST

DICOM WORKLIST SERVER
OPTIMIZING YOUR WORKFLOW

SYSTEM REQUIREMENTS

	MINIMUM	RECOMMENDED
OS:	Windows 2000, XP	Windows XP Professional
CPU:	Pentium 1 GHz	Pentium 2 GHz
RAM:	256 MB RAM	512 GB RAM
HDD:	20 GB free hard disc space	120 GB free hard disc space



© 2008 IMAGE Information Systems Ltd. - For a Better View in Diagnostics! iQ-WORKLIST 1.4 INT ENG 001R

CONSISTENT RIS PACS DATA

OUR SOLUTIONS FOR YOUR IMAGING NEEDS

- iQ-VIEW®** An easy-to-use DICOM image viewer
- iQ-VIEW® 3D** 3D post-processing workstation
- iQ-CAPTURE** Add-on module for capturing images from analog video sources
- iQ-WEBX** DICOM server for storage, teleradiology and image distribution
- iQ-RIS** The RIS that simplifies your work
- iQ-WORKLIST** DICOM worklist server optimizing your workflow
- iQ-ROUTER** Image compression for teleradiology and workflow management
- iQ-PRINT** DICOM paper print server
- iQ-ROBOT** Automatic burning and labeling of patient CDs and DVDs
- iQ-NUC** Simple nuclear PACS integration
- DICOMReader** Read any DICOM CD into your PACS!
- OrthoView™** Add-on module for orthopedic templating and trauma planning



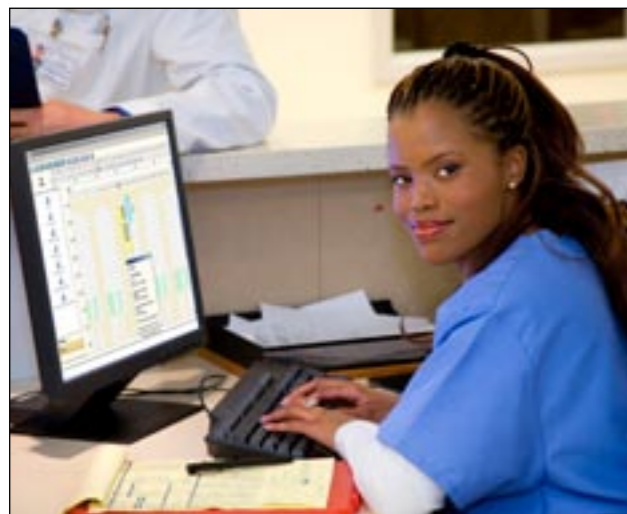


iQ-WORKLIST IS A POWERFUL DICOM WORKLIST SERVER

... and a must-have in every imaging center.

It can interface with most radiology, practice or hospital information systems, read scheduling data and create DICOM worklists for imaging modalities.

By using worklists, you can accelerate the imaging workflow and avoid typing errors. A worklist broker ensures that the data from imaging studies and information systems is consistent on every level.



iQ-WORKLIST can be installed and configured within just a few minutes. It is reliable and easy to maintain. All connections and network nodes are included in a single license!

iQ-WORKLIST FEATURES

GENERAL

- Runs as an NT service in the background with low system resources
- Several log levels for documentation or error tracking

INPUT

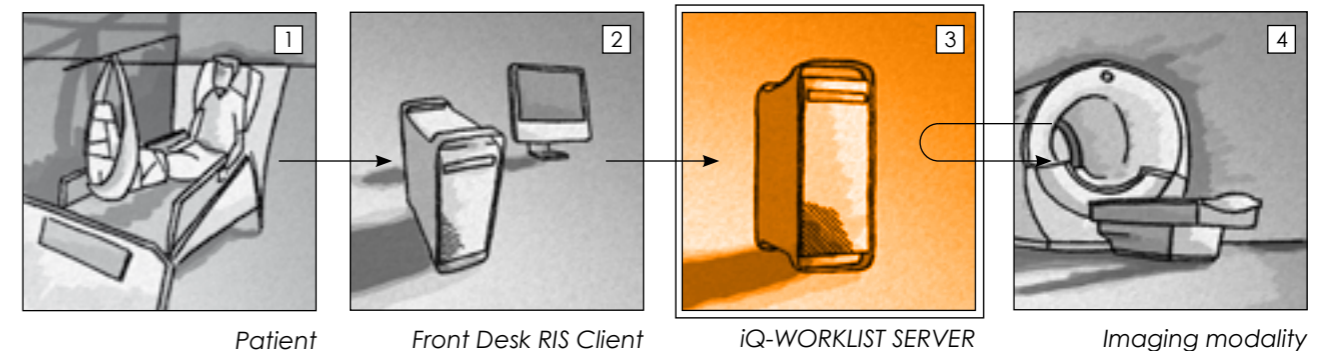
- Reads HL7 messages
- Reads BDT/GDT data
- Multiple sources (HL7 und BDT) concurrently
- Compatible to HL7 2.x
- Mapping file to adapt HL7 dialects
- HL-7 network listener

DICOM

- DICOM worklists based on scheduling data
- No limitation in the number of DICOM nodes
- BDT accession numbers can be created based on time stamps
- Compatible to any DICOM worklist client



- 1 The patient is registered to a RIS or HIS.
- 2 The RIS/HIS sends scheduling data to the iQ-WORKLIST server.
- 3 iQ-WORKLIST collects scheduling information in a local database and provides a DICOM worklist to any imaging modality.
- 4 The imaging modalities query the worklist manually or automatically to get accurate patient and scheduling information.



Patient

Front Desk RIS Client

iQ-WORKLIST SERVER

Imaging modality