



CR ACE
EFFICIENCY IN CR

SYSTEM REQUIREMENTS

MINIMUM

ENVIRONMENTAL CONDITIONS

Temperature:	15-30 °C (59 - 86°F)
Humidity:	15-75% RH
Magnetic fields:	Max. 3,8µT in
Conformance with EN 61000-4-8:	Level 2
Rate of change of temperature:	0,5°C/minute (0.9°F)

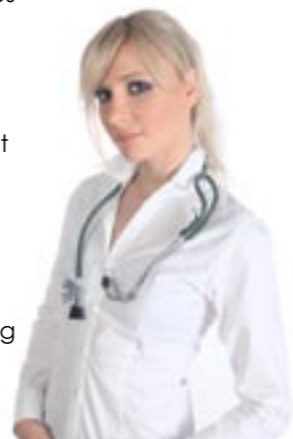


© 2008 IMAGE Information Systems Ltd. - For a Better View in Diagnostics iQ-CR ACE 1.0 INT ENG 001R

DISCOVER THE WORLD OF CR

OUR SOLUTIONS FOR YOUR IMAGING NEEDS

- iQ-VIEW®** An easy-to-use DICOM image viewer
- iQ-VIEW® 3D** 3D post-processing workstation
- iQ-CAPTURE** Add-on module for capturing images from analog video sources
- iQ-WEBX** DICOM server for storage, teleradiology and image distribution
- iQ-RIS** The RIS that simplifies your work
- iQ-WORKLIST** DICOM worklist server optimizing your workflow
- iQ-ROUTER** Image compression for teleradiology and workflow management
- iQ-PRINT** DICOM paper print server
- iQ-ROBOT** Automatic burning and labeling of patient CDs
- iQ-NUC** Simple nuclear PACS integration
- DICOMReader** Read any DICOM CD into your PACS!
- OrthoView™** Add-on module for orthopedic templating and trauma planning





THE iQ-CR ACE IS A CR READER TO DIGITIZE YOUR X-RAY IMAGING

iQ-CR ACE Digitizer makes no compromises in image quality.

It reads imaging plates at the standard resolution of 10 pixels per millimeter which insures you the safety of accurate diagnoses.

This compact table-top sized device can easily be placed at any location. Thanks to the use of optimal accessories, the device can be operated directly in the x-ray room. Also the specifically dedicated cassettes are easy to handle and fit to your existing environment.

The model was designed with highest efficiency for a low costs in mind. This is achieved by a modular

design, which makes maintenance easy and cost-saving.

Preferences of the iQ-CR ACE:

- Compact digitizer
- Ideal solution for medical specialist centers
- Low cost of ownership
- Service friendly design

iQ-CR ACE FEATURES

DIGITIZER TYPE

- Single cassette feed

POSSIBLE CASSETTE SIZES

- Single cassette feed:
 - 35 x 43 cm (14 x 17") with 3280 x 4248 Pixel matrix size
 - 24 x 30 cm (9.5 x 12") with 2328 x 2928 Pixel matrix size
 - 18 x 24 cm (7 x 9.5") with 1728 x 2328 Pixel matrix size
 - 15 x 30 cm (6 x 12") with 1440 x 2928 Pixel matrix size

RESOLUTION

- Spatial resolution 10 pixels/mm
- Data acquisition 20 bits/pixel
- Output to processor 16 bits/pixel

ERROR HANDLING

- LED-Status Indicator Equipment status and error description

DIMENSIONS AND WEIGHT

- (WxDxH) 693x701x464 mm
- Depth including input tray 769 mm
- Weight approx 98 kg

POWER

- Europe 2 20–240 V/50–60 Hz
Standby 120 W, max. 320 W, 16 A-fuse
- USA 120 V/60 Hz
Standby 120 W, max. 320 W, 15 A-fuse
- Japan 100 V/60 Hz
Standby 120 W, max. 320 W, 15 A-fuse

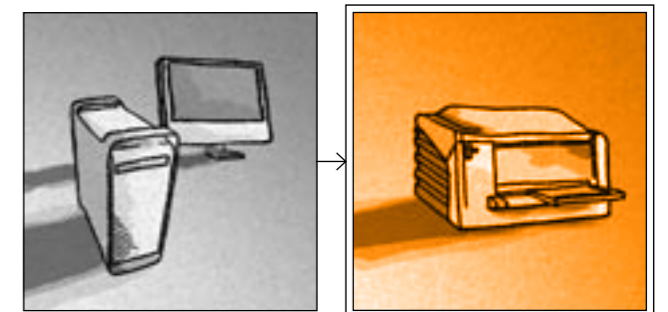
SAFTY

- UL, CE

ENVIRONMENTAL EFFECTS

- Noise level max. 65db (A)
- Heat dissipation Standby 120 W, max. 320 W

Scan CRs directly into your PACS with the iQ-CR acquisition station. The automatic ACE image post processing gives you a superb quality for both soft tissue and bones at the same time!



Reading Station

iQ-CR ACE